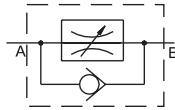


## 2FRM SERIES FLOWS CONTROL VALVES

2FRM series flow control valves are restrictive style flow regulators, without affected by pressure and temperature.



Model 2FRM 5 - 30 15 B V \*

Size: 5, 10, 16

Series number  
30=Size5, 20= Size10; 50= Size16

See the form below for flow rate (direction A-B)

For further details

No code=NBR seals for petroleum oils  
V=FPM seals for phosphate ester

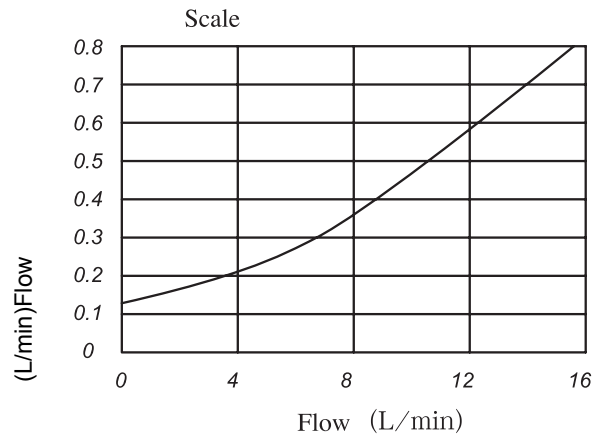
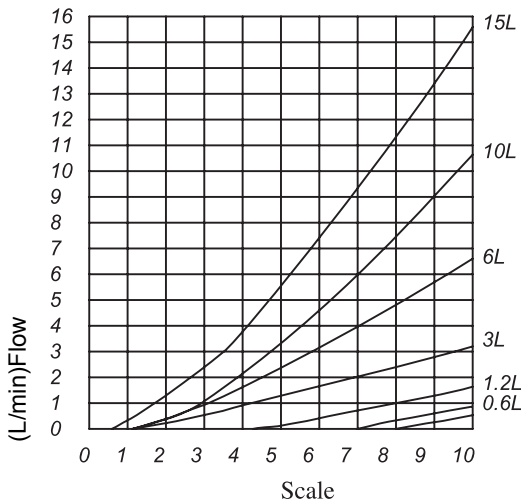
No code=Without pressure compensating locator  
B=With pressure compensating locator

*Technical data*

通径	Size	5							10				16		
最大流量(A-B)	Max.flow rate (L/min.)	0.2	0.6	1.2	3	6	10	15	10	16	25	50	60	100	160
△P值(B-A)(Mpa)	△P Value(MPa)	0.05	0.05	0.06	0.09	0.18	0.36	0.67	0.2	0.25	0.35	0.6	0.28	0.43	0.73
工作压力	Operating pressure (Mpa)	21							31.5				31.5		
最小压力损失	Min. pressure loss	0.3-0.5							0.3-0.7				0.5-1.2		
过滤(延 使用寿命)	Filtering to prolong service life (µm)	25(Q<5 L/min.); 10(Q<0.5 L/min.)													

### 2FRM5 Operating curves

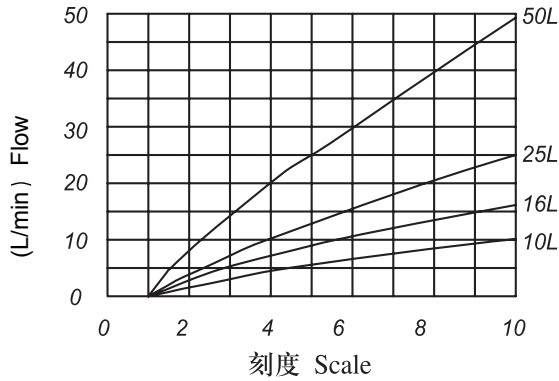
A → B Flow direction from A to B  
5 Size



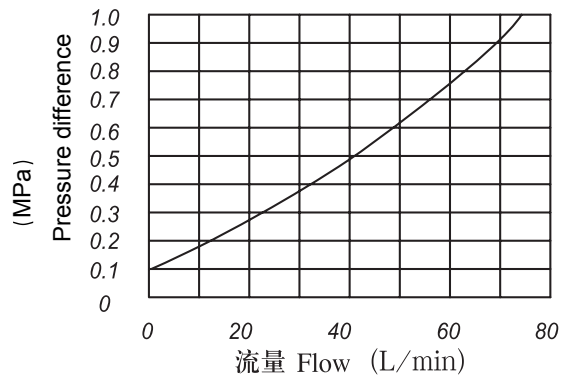


2FRM10 Operating curves

流动方向A→B  
Flow direction from A to B

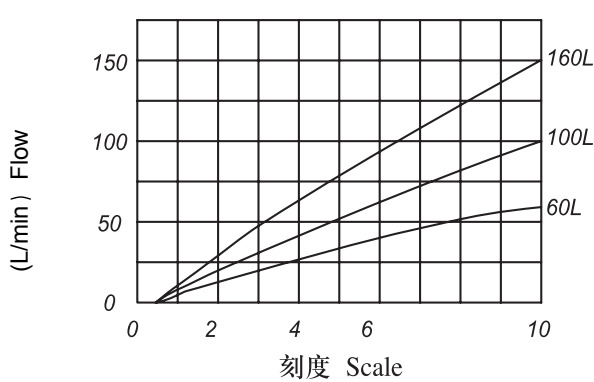


流动方向B→A  
Flow direction from B to A

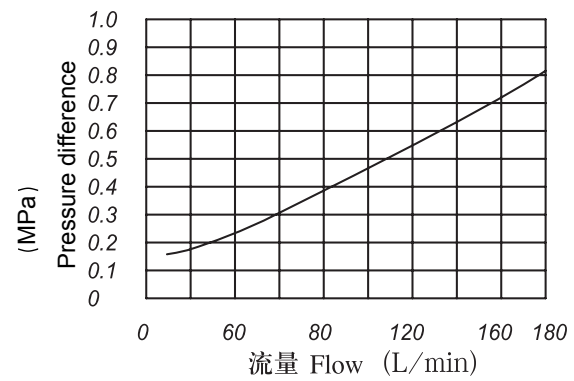


2FRM16 Operating curves

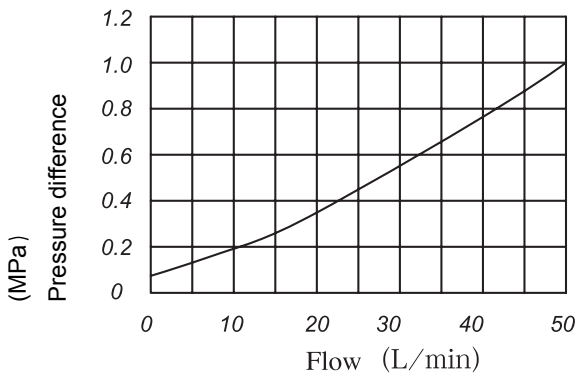
流动方向A→B  
Flow direction from A to B



流动方向B→A  
Flow direction from B to A

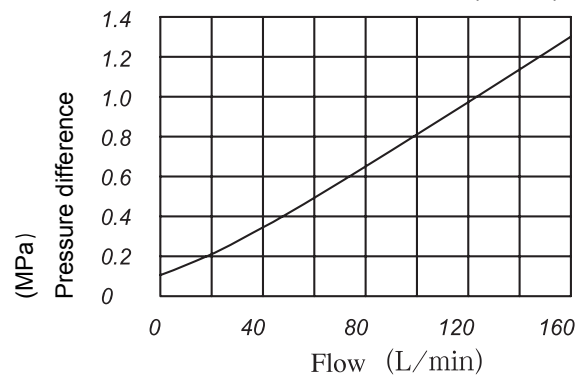


Z4S10 Rectifier sandwich place curves

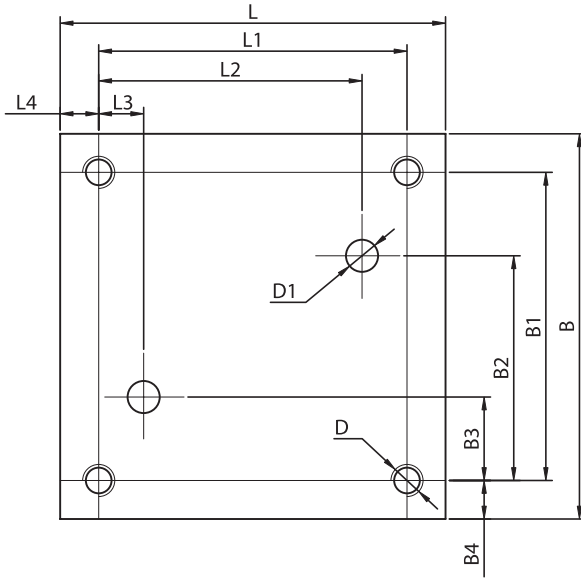


Z4S16 Rectifier sandwich place curves

Flow direction from A to B (B to A)



▶ 2FRM installation dimensions



	B	B1	B2	B3	B4	L	L1	L2	L3	L4	D	D1
2FRM5	60	48	35	13	6	60	48	41	7	6	4-M5	2-Ø5
2FRM10	101.5	82.5	71.6	30.1	95	95	76	55.1	9.6	8.5	4-M8	2-Ø10
2FRM16	123.5	101.5	90.5	15	11	123.5	101.5	75	20.5	11	4-M10	2-Ø16