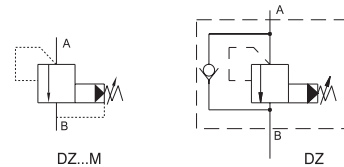
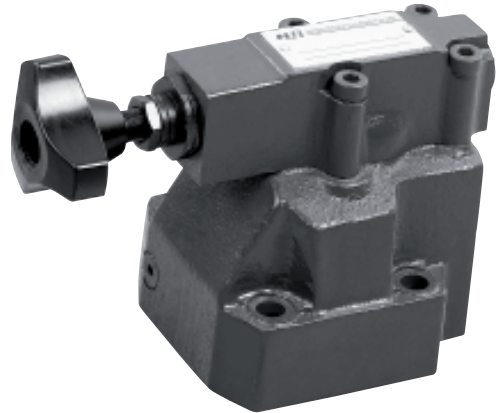


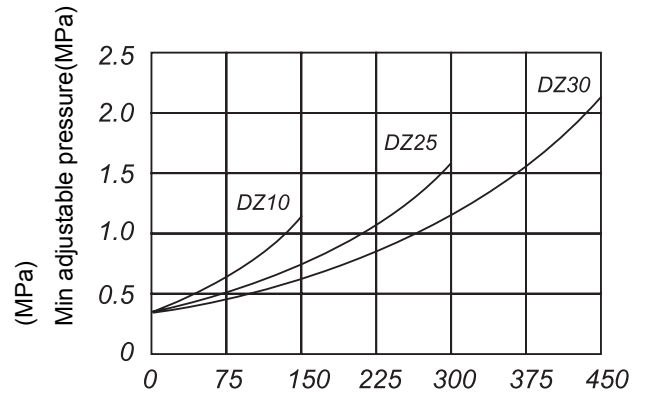
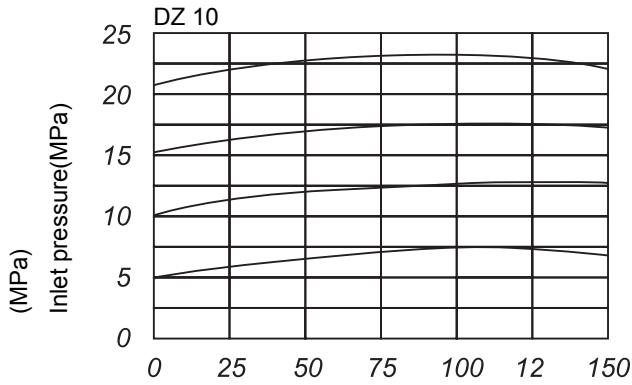
## DZ30/5X PILOT-OPERATED SEQUENCE VALVES

DZ type pilot-operated sequence valve is used to control the sequencing, braking, unloading or other functions.

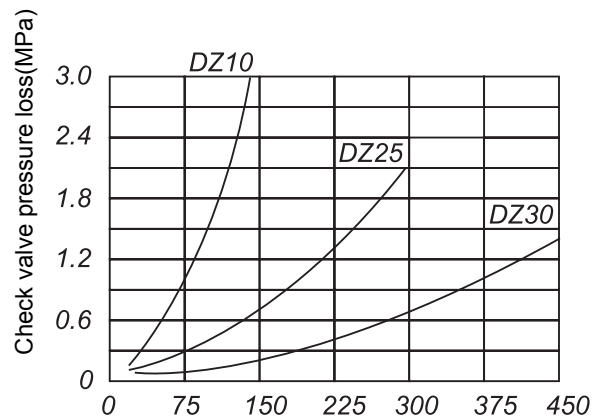
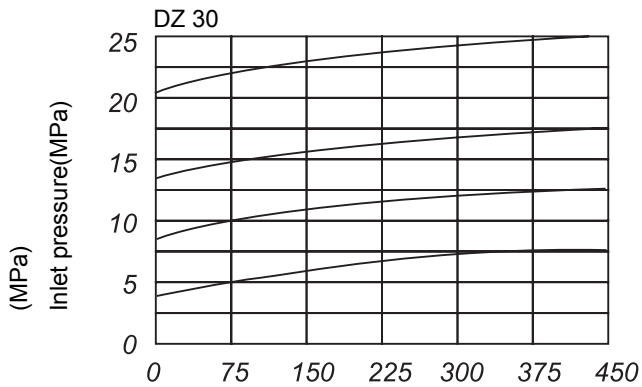
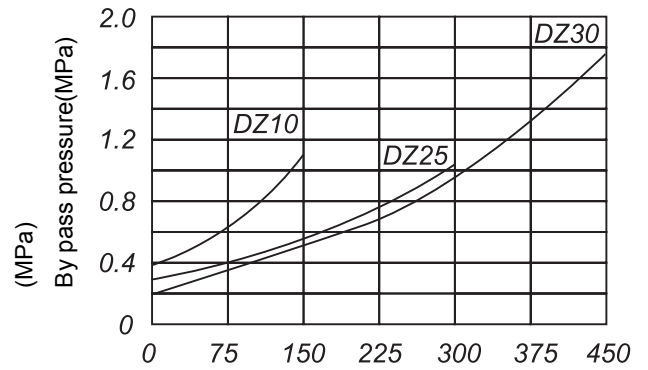
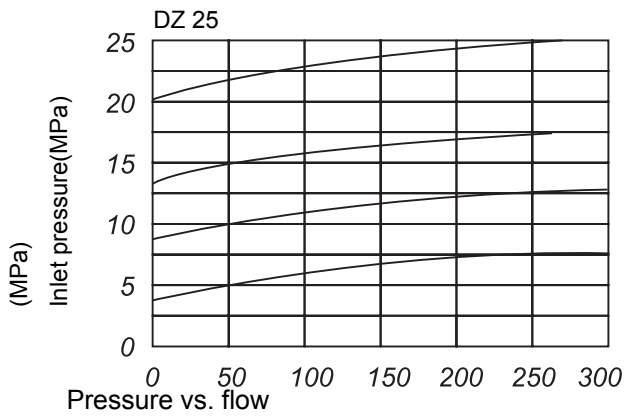
The valve has two connection types and four kinds of control methods of pilot oil, therefore, it has different functions by changing the control method of pilot oil. The 5X series DZ type valve has higher performance than 30 series, with smoothly adjustable performance, widely adjustable range, high flow rate.



	DZ	C	10	- 1 -	30	/ 210 /	X	M / 2 /	V *
<p>Model</p> <hr/> <p>No code = Complete valve C=(Without size) Pilot valve C=(With size) Pilot valve with cartridge</p> <p>Size</p> <p>10=10; 25=20; 32= 30</p> <p>1=Hand knob; 2=Screw adjustment with protective cap</p> <p>30=30 Series; 50=5X Series</p> <p>210=Max. adjustable pressure is 21MPa</p>									
	<p>For further details</p> <p>No code=NBR seals for petroleum oils V=FPM seals for phosphate ester</p> <p>No code=Drain port with G 1/4" 2=Drain port with M14X1.5</p> <p>No code=With check valve M=Without check valve</p> <p>No code= Internal pilot, internal drain X=External pilot, internal drain Y=Internal pilot, external drain XY=External pilot, external drain</p>								



Pressure vs. flow

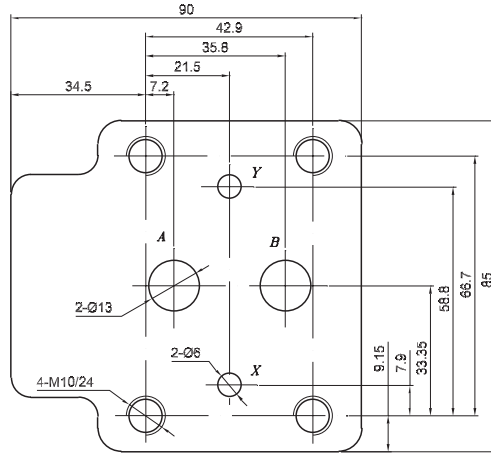


Charateristic

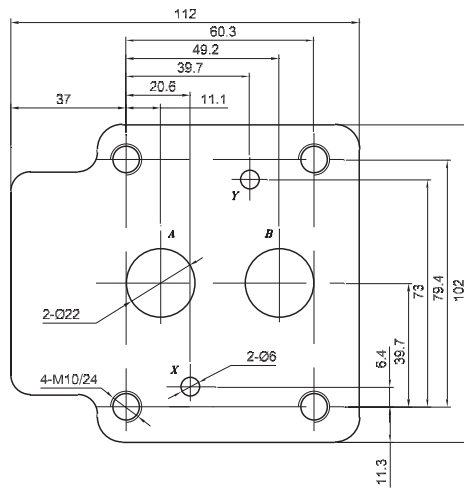
	Size	10	20	32
	Flow (L/min)	150	300	450
径	压	Operating pressure of A,B,X port (MPa)		
流量		Back pressure of Y port (MPa)		
连接口A,B,X的工作		Adjustable switching pressure MPa		
连接口Y的背压		Fluid temperature range		
可调节的切换压力				

▶ Installation dimensions

DZ10



DZ20



DZ30

