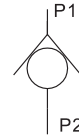


**RVP SERIES CHECK VALVES**

RVP series check valves allow free flow in one direction and block flow in the counter direction.

The valve connection is subplate mounting.



Model RV P 10 \* 10 / \* For further details

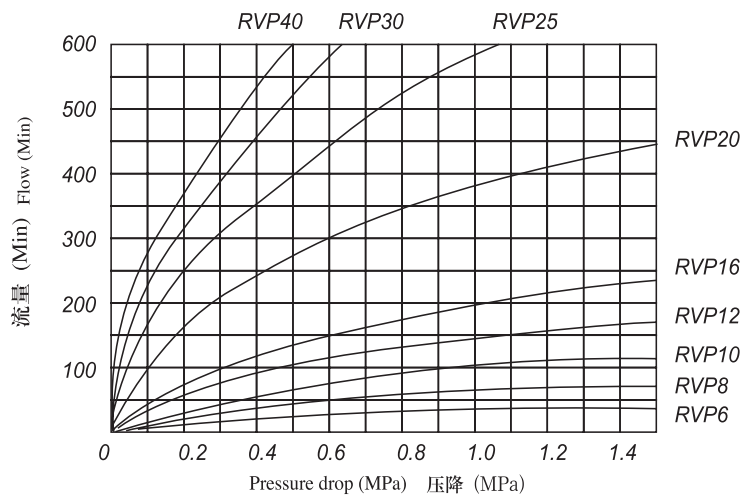
P=Subplate mounting

Size: 6/8/10/12/16/20/25/30/40 Series number

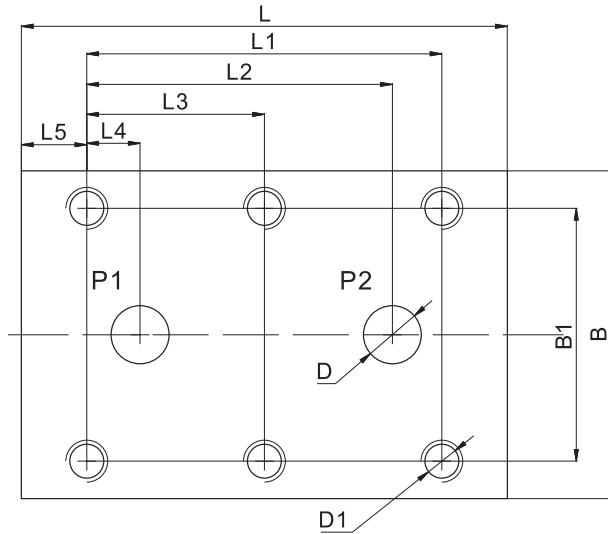
*Technical data*

Size	6	8	10	12	16	20	25	30	40	Max. operating pressure	Cracking pressure
Rated flow(L/min.)	15	30	50	80	100	200	300	380	460	31.5	0.05

**Operating curves**



## RVP Installation Dimensions



Model	B	B1	L	L1	L2	L3	L4	L5	D	D1
RVP6	41.5	28.5	41.5	19	17.6	–	1.6	6.4	2-Ø5	4-M6
RVP8	46	33.5	63.5	35	30	–	4.5	14.2	2-Ø7	4-M6
RVP10	51	38	70	33.5	29.5	–	4	18	2-Ø10	4-M6
RVP12	57.5	44.5	80	38	34	–	4	21	2-Ø13	4-M6
RVP16	70	54	104	76	65.4	38	11.4	14	2-Ø17	6-M8
RVP20	76.5	60	127	95	76	47.5	19	16	2-Ø22	6-M8
RVP25	100	76	165	120	100.1	60	20.6	15	2-Ø28.5	6-M10
RVP30	115	92	186	143	118.8	71.5	23.8	15	2-Ø35	6-M12
RVP40	140	111	192	133.5	114.5	67	25.5	16	2-Ø47.5	6-M12