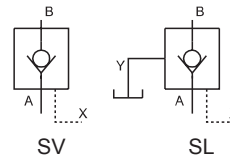


SV/SL PILOT OPERATED CHECK VALVES

SV/SL pilot operated check valves allow free flow in one direction and block flow in the counter direction to maintain pressure. The oil is allowed to flow in the counter direction when the X port is connected.
 SV is designed for internally drained, SL is designed for externally drained.



S V 10 P A 1 - 30 / 2 V *

V=Internally drained (without drain port)
 L=Externally drained (with drain port)

See the table below for size

P=Subplate mounting(Only for size 10,20,30);
 G=Threaded connection

A=Pilot type ;
 B=Direct type

1=0.3MPa ; 2=0.5MPa ; 3=0.8MPa

For further details

No code=NBR seals for petroleum oils
 V=FPM for phosphate ester

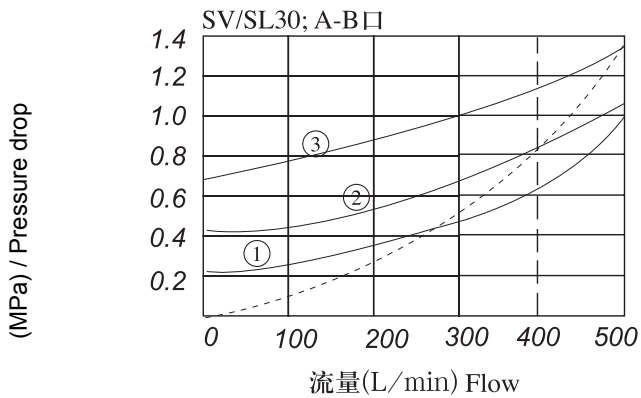
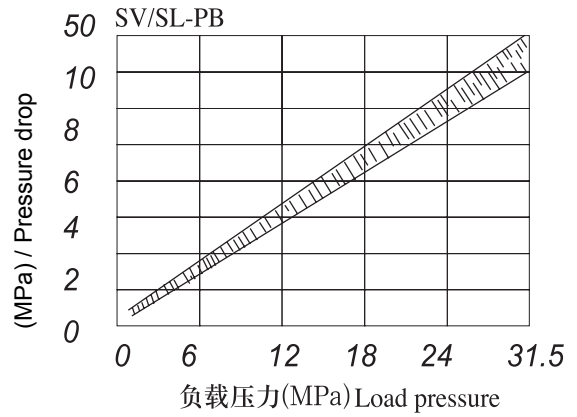
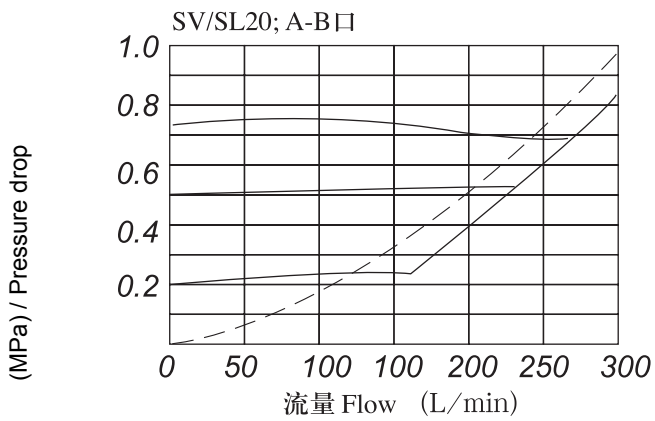
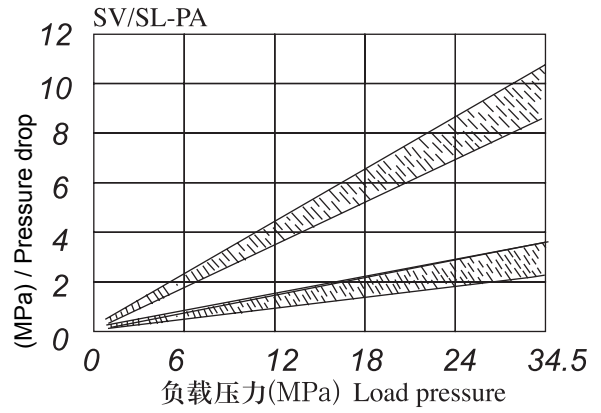
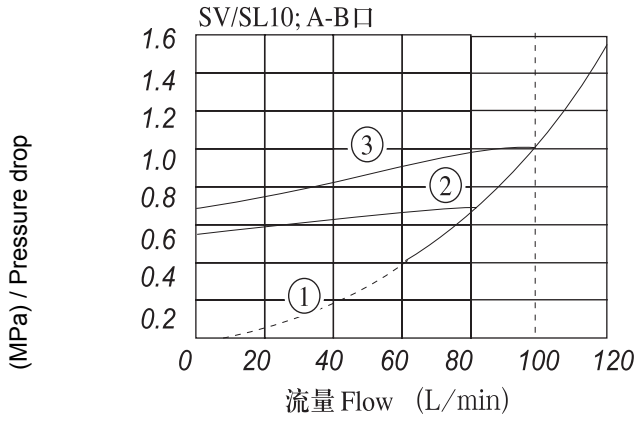
No code=Inch thread; 2=Metric

Series number

Technical data

Size	SV10	SL10	SV20	SL20	SV30	SL30
Port X, pilot volume(cm ³)	2.2		8.7		17.5	
Y口容积 Port Y, volume(cm ³)	-	1.9	-	7.7	-	15.8
流动方向 Direction of flow	Free flow A to B; B to A when piloted open					
工作压力 Operating pressure	31.5					
控制压力 Pilot control pressure range	0.5—31.5					
最大流量 Max. flow rate (L/min)	80		150		300	

▶ Pressure drop vs. flow curves



* ①, ②, ③ above the curves are the same in the ordering code