

## VANNE MANUELLE



4 WMM 6 E 60 / F V \*

3=3 arrivée d'huile  
4=4 arrivée d'huile

Modele

Taille 6

Type de distributeur

Autres spécifications

Pas de code=NBR joints pour pétrole et huile  
V=FPM joints pour phosphate ether

Pas de code=Retour par ressort  
F=Avec detent

Series n°  
Taille 6=50; Taille 10=10; Taille 16=30

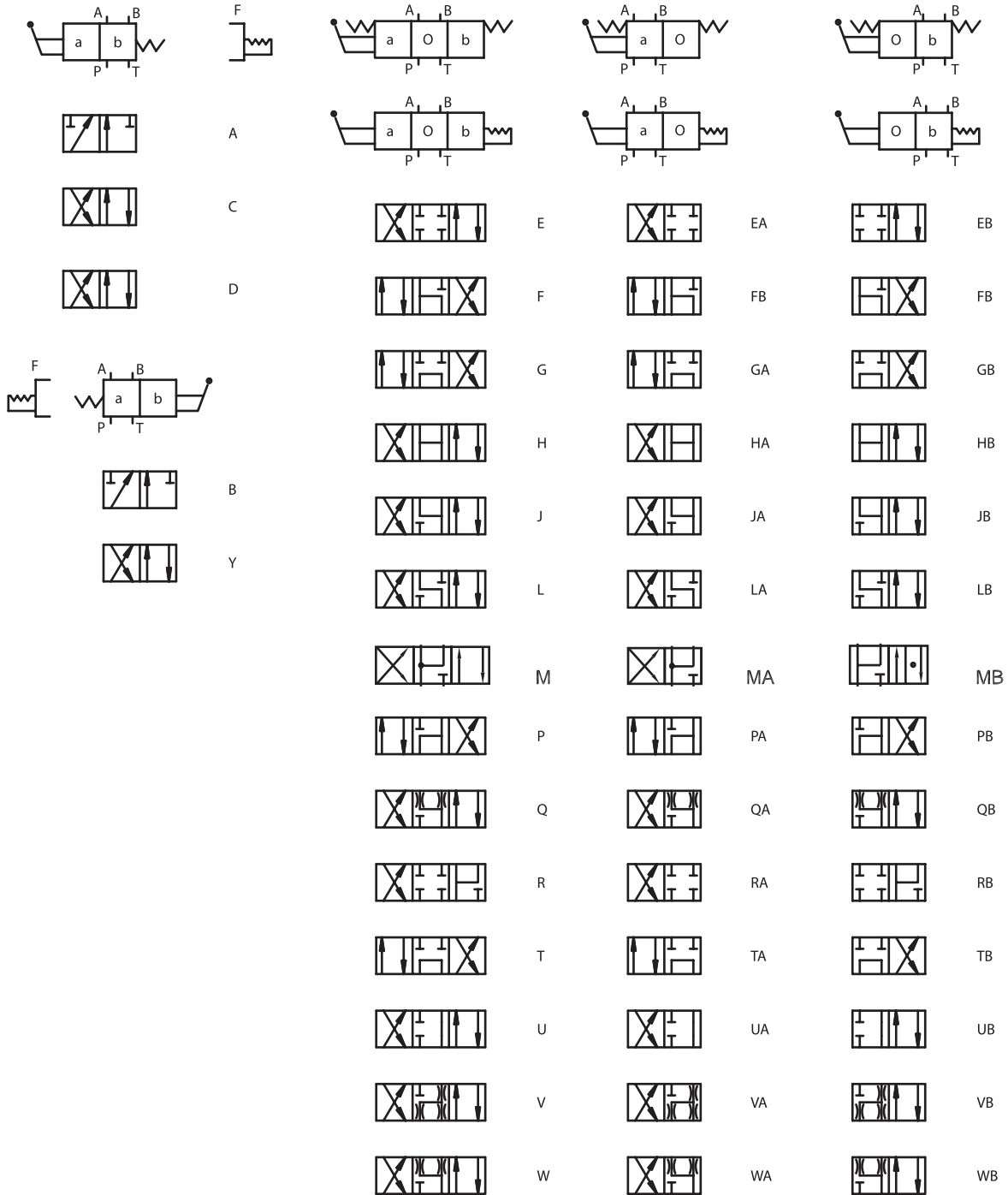
### Données Technique

Taille	6
Débit Maxi(L/min)	60
Pression Maxi (Bars)	A, B,P oil ports 315;T oil oil port 160

# MULTIFLUID



## ▶ WMM Type de distributeur



# MULTIFLUID



4 WMM 10 E 30 / F V \*

3=3 arrivée d'huile  
4=4 arrivée d'huile

Modele

Taille 10

Type de distributeur

Autres Spécifications

Pas de code=NBR joints pour pétrole et huile  
V=FPM joints pour phosphate et ether

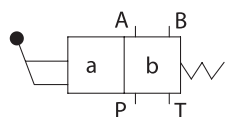
Pas de code=Ressort de rappel  
F= Avec detent

Series n°  
Taille 6=50; Taille 10=10; Taille 16=30

## Donnée Technique

Taille	10
Débit max (l/min)	100
Pression max (bars)	A, B,P oil ports 315b;T oil oil port 160b

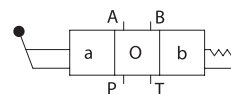
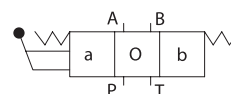
▶ WMM type de distributeur



A

C

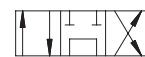
D



E



F



G



H



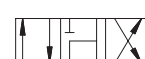
J



L



M



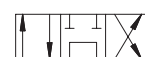
P



Q



R



T



U



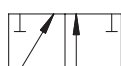
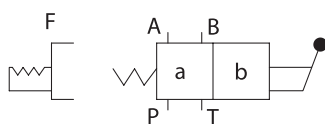
V



W



S



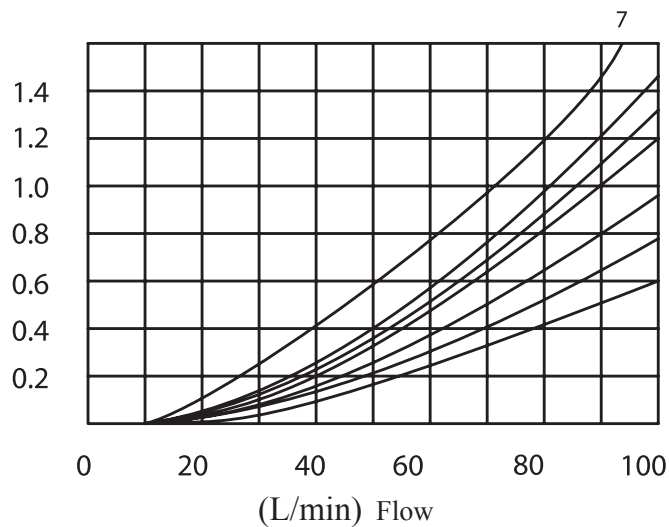
B



Y

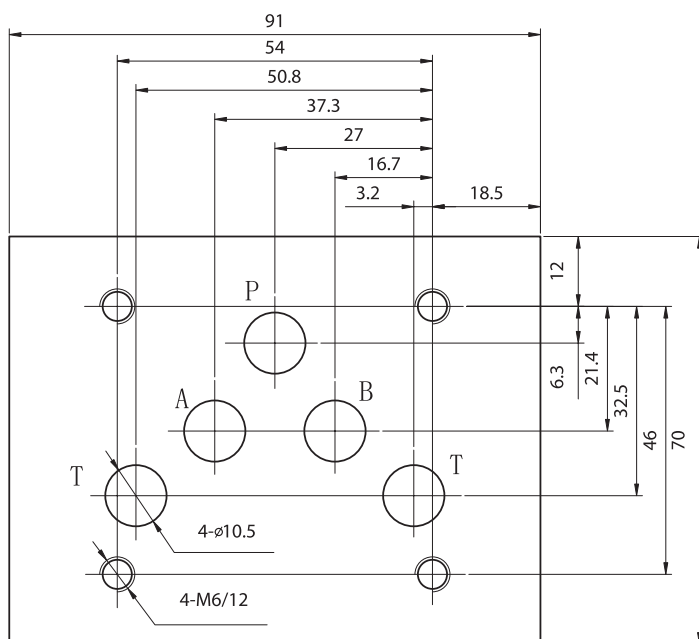


## ▶ WMM10 Pressure drop vs. flow curves



Spool symbols	Flow direction			
	P-A	P-B	A-T	B-T
A	2	2		
B	2	2		
C	2	2	3	3
D	2	2	3	3
E	2	2	4	4
F	2	3	3	5
G	3	3	4	6
H	1	1	4	5
J	2	2	3	3
L	2	2	3	5
M	1	1	5	5
P	3	2	5	3
Q	2	2	4	4
R	2	4	3	
T	3	5	5	6
U	2	2	3	5
V	2	2	4	4
W	2	2	5	5
Y	2	2	3	3

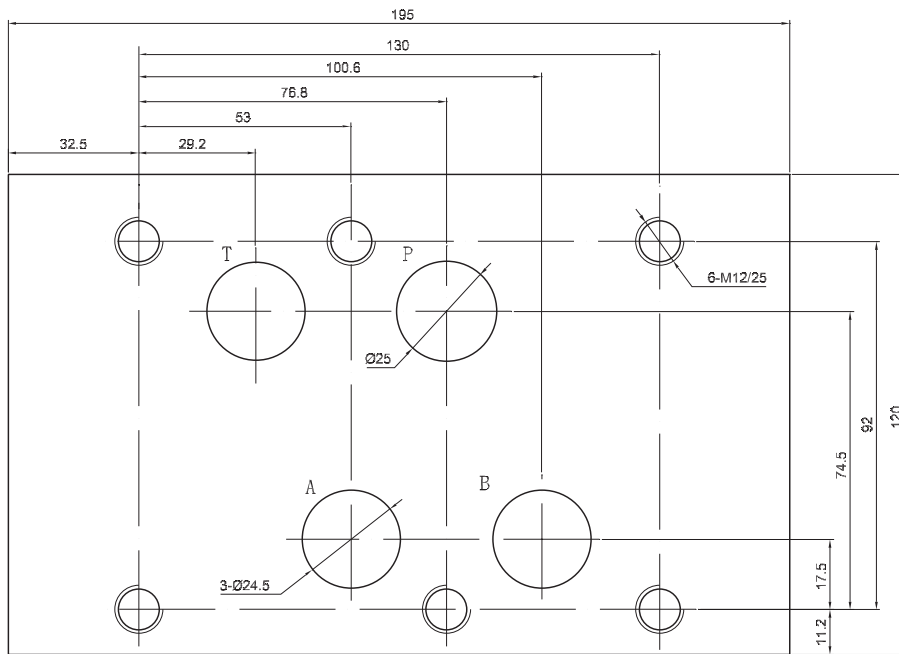
## ▶ 4WMM10 Installation Dimensions



Point 7 is "R" spool on the b position, flow A-B

Point 4 is "G" spool on the middle position, flow P-T

## 4WMM25 Installation Dimensions





4 WMM 16 E 60 / F V \*

3=3 arrivée d'huile  
4=4 arrivée d'huile

Modele

Taille 16

Type de distributeur

Autres spécifications

No code=NBR joints pour pétrole et huile  
V=FPM joints pour phosphate et ether

Pas de code=Rappel ressort  
F=Avec detent

Series n°  
Taille 6=50; Taille 10=10; Taille 16=30

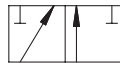
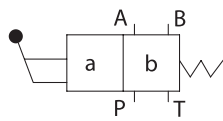
## Données Technique

Taille	16	25
Débit maxi(L/min)	300	650
Pression Maxi (Bars)	A, B,P oil ports 315;T oil oil port 160	

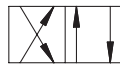
# MULTIFLUID



## WMM type de distributeur



A



C



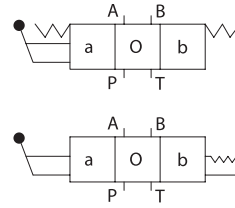
D



K



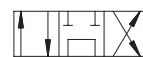
Z



E



F



G



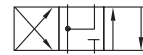
H



J



L



M



P



Q



R



T



U



V



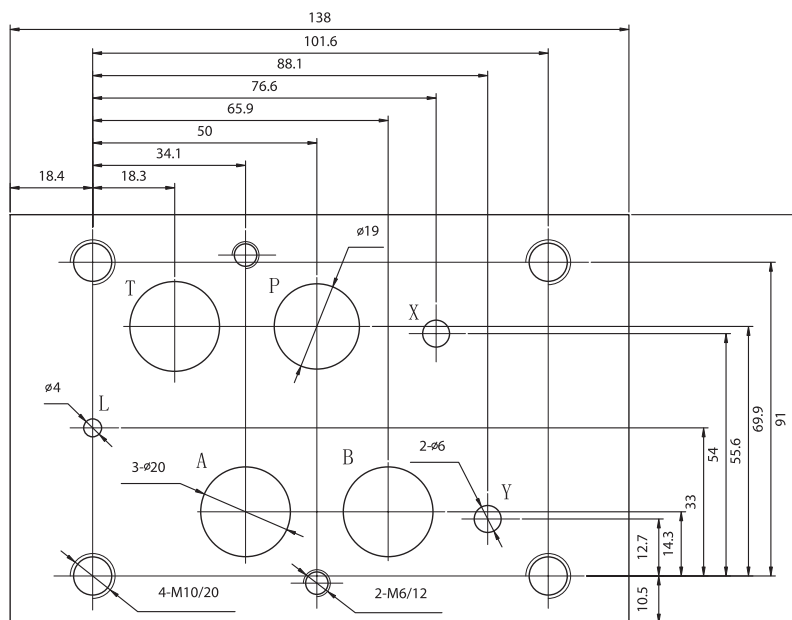
W



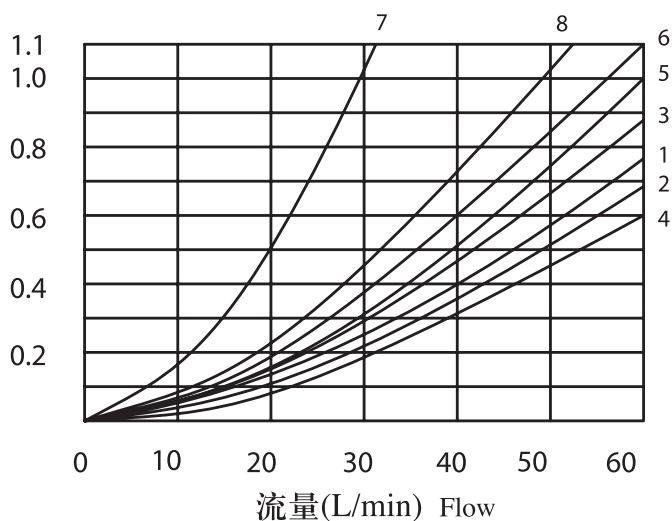
S

注：S型仅WMM16有  
Note: Only WMM16 with S

## 4WMM16 Installation Dimensions



▶ WMM6 Pressure drop vs. flow curves



机能 Spool symbols	流动方向 Flow direction			
	P-A	P-B	A-T	B-T
A	3	3		
B	3	3		
C	1	1	3	1
D	5	5	3	3
E	3	3	1	1
F	2	3	3	5
G	5	3	6	6
H	2	4	2	2
J	1	1	2	1
L	1	1	2	2
M	2	4	3	3
P	2	3	3	5
Q	1	1	2	1
R	5	5	4	
T		3	6	6
U	3	1	3	3
V	1	2	1	1
W	1	1	2	
Y	5	5	3	3

Point 7 is "R" spool on the b position, flow A-B

Point 8 is "G" spool on the middle position, flow P-T

▶ 4WMM6 Installation Dimensions

