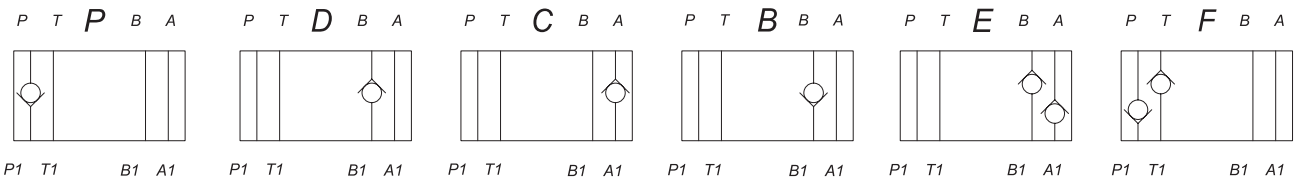
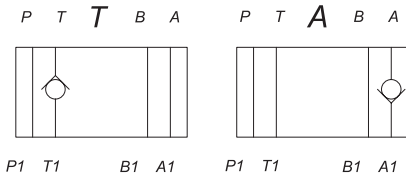


Z1S SERIES MODULAR CHECK VALVES

Z1S series are direct operated check valves.



ZIS 6 A 1 - 30 V *

Model _____

Size 6; 10 _____

See the symbol for flow type _____

1=Cracking pressure : 0.05MPa
 2=Cracking pressure : 0.3MPa
 3=Cracking pressure : 0.5MPa

_____ For further details

_____ No code=NBR seals for petroleum oils
 V=FPM seals for phosphate ester

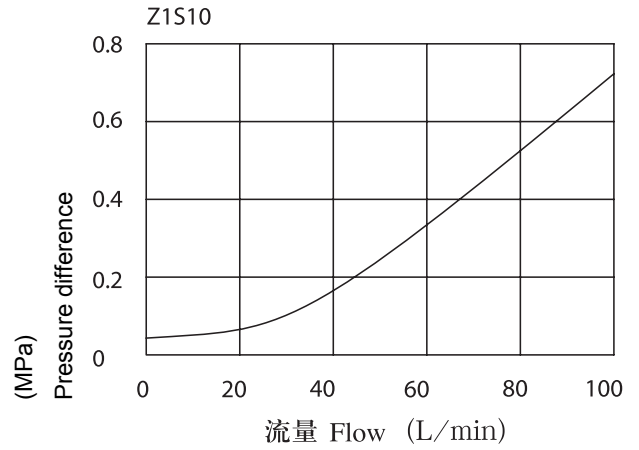
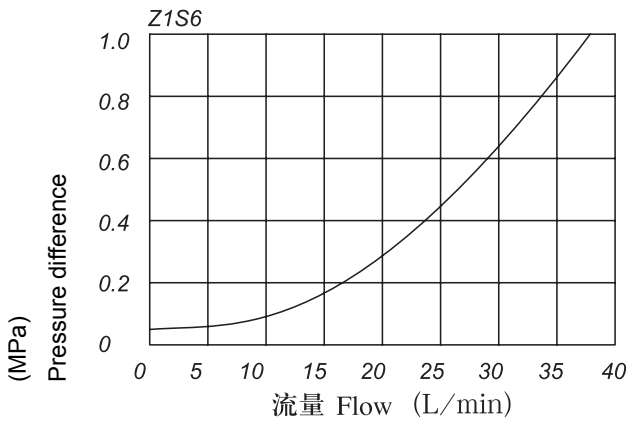
_____ Series number

Technical data

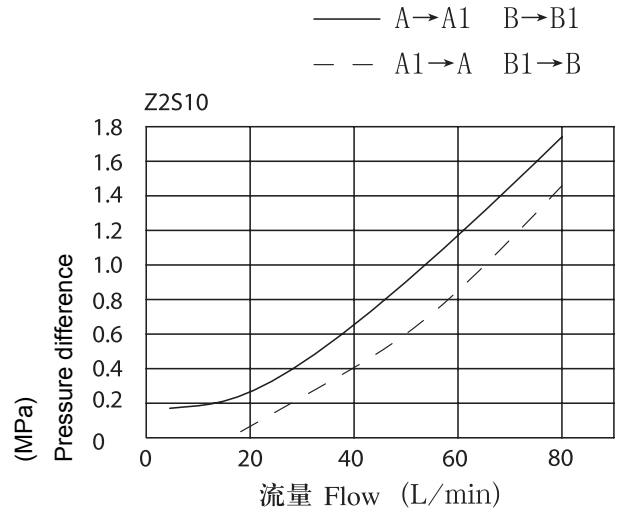
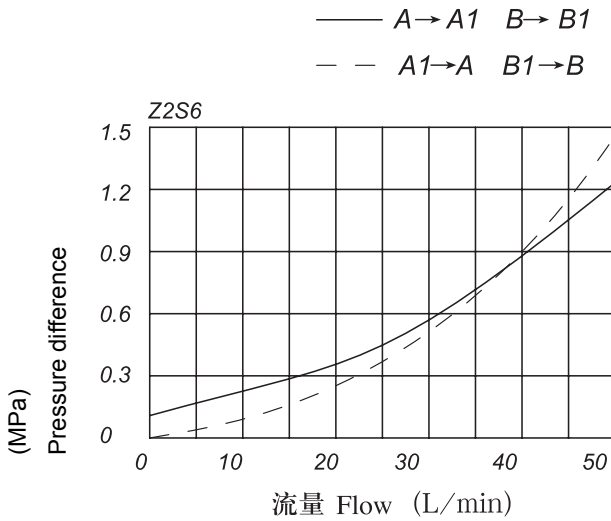
Size	6	10
Operating pressure (MPa)	31.5	31.5
Flow rate (L/min)	40	100
Oil temperature range (°C)	-20~70	-20~70

Installation dimensions refer to page 5, 8.

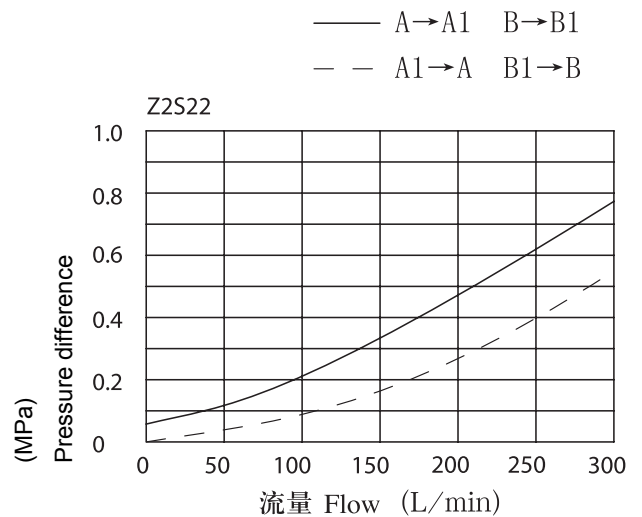
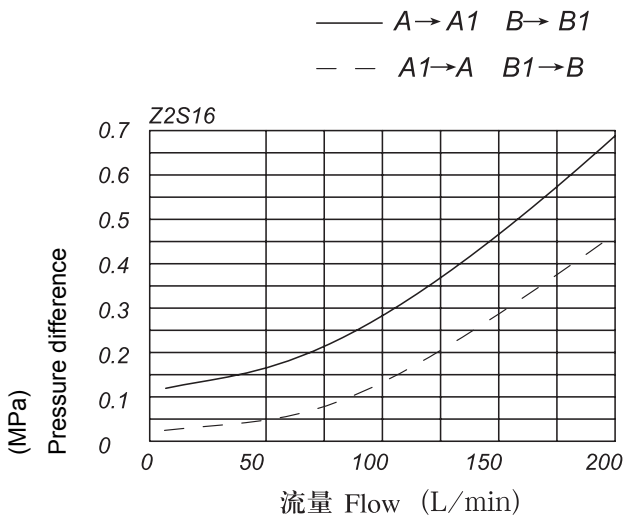
▶ Operating curves



▶ Operating curves

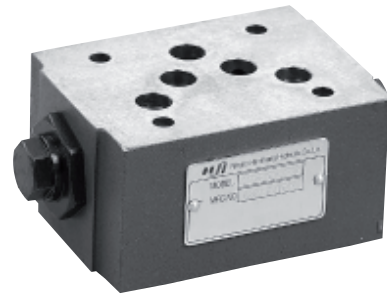
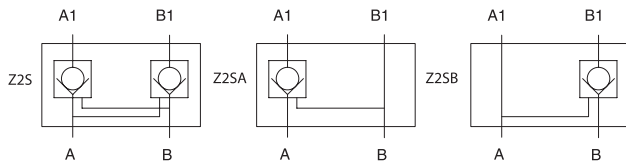


▶ Operating curves



Z2S SERIES PILOT CONTROLLED CHECK MODULAR VALVES

Z2S series are pilot operated style sandwich valves. These valves used to close one or two actuator ports.



Model Z2S 6 A 10 / V *

Size 6; 10;16;22

No code=A,B ports with check valves
 A=A port with check valve
 B=B port with check valve

For further details

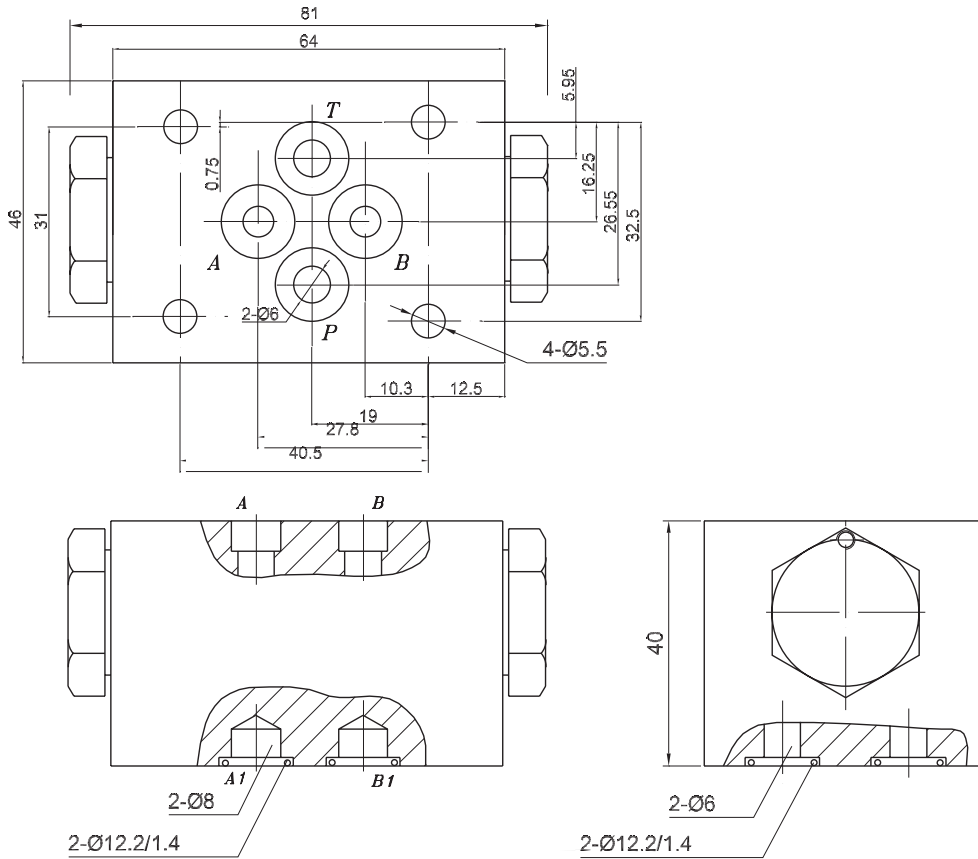
No code=NBR seals for petroleum oils
 V=FPM seals for phosphate ester

Series number
 50=Size 6;10=Size 10; 30=Size 16, 22

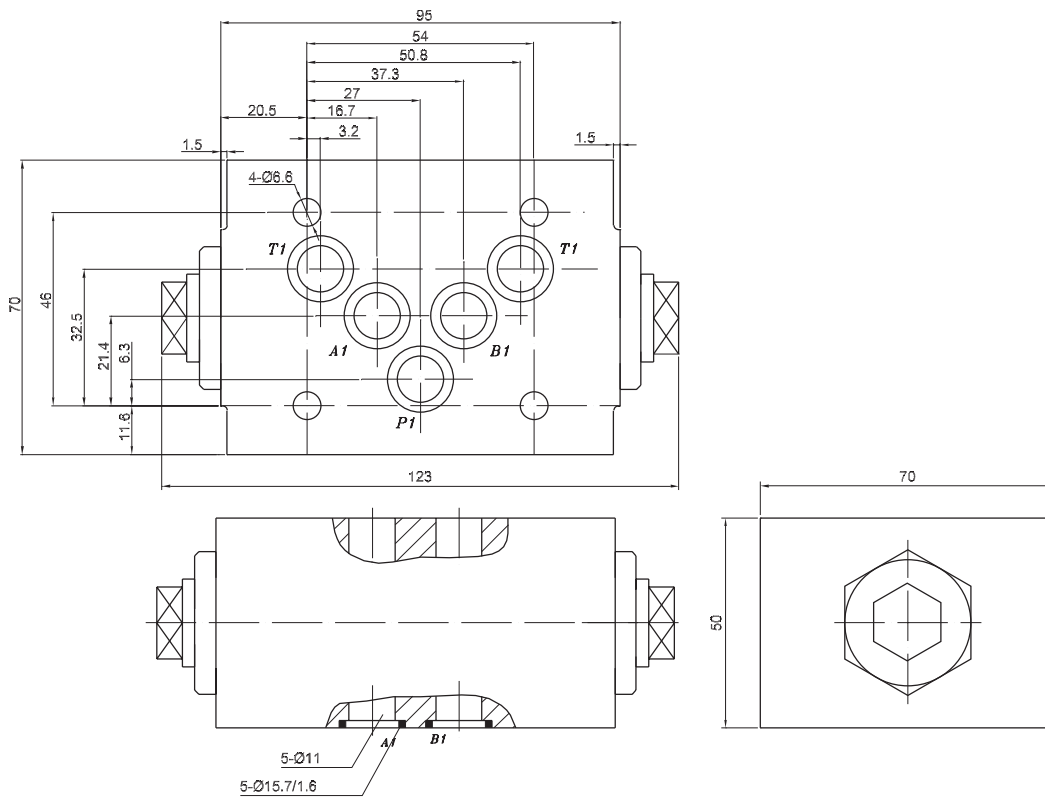
Technical data

Size	6	10	16	22
Operating pressure (MPa)	31.5	31.5	31.5	31.5
Cracking pressure of check valve(MPa)	0.15	0.1	0.1	0.25
Flow rate (L/min.)	50	80	200	300
Fluid temperature range (°C)	-20~80	-20~80	-20~80	-20~80

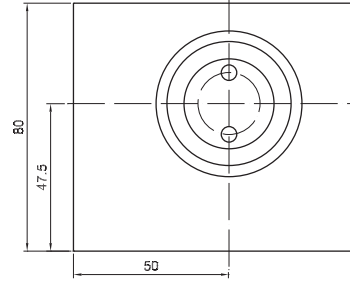
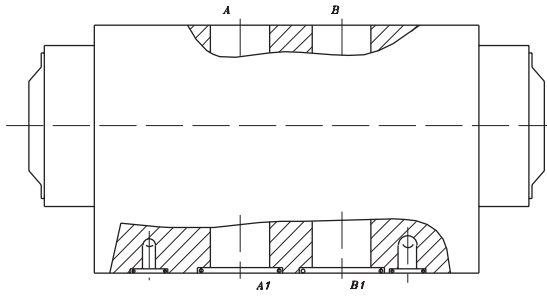
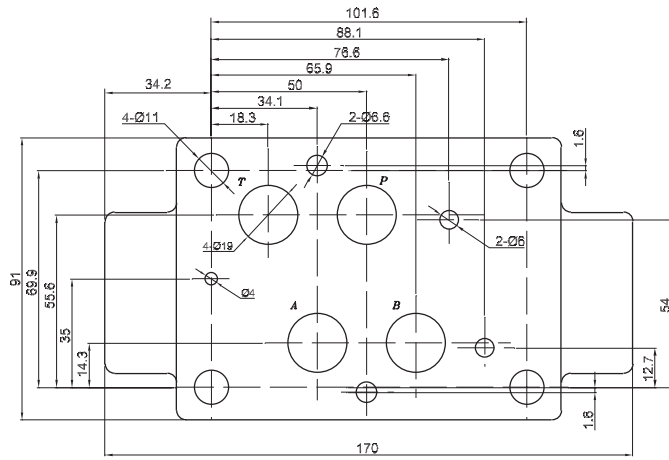
Z2S 6 Installation Dimensions



Z2S 10 Installation Dimensions



Z2S 16 Installation Dimensions



Z2S 22 Installation Dimensions

