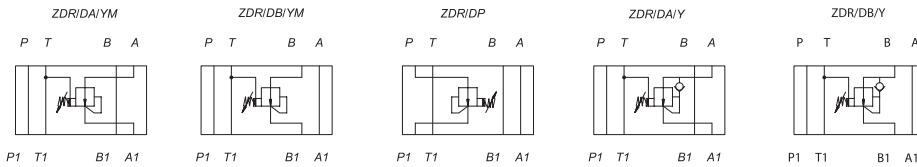
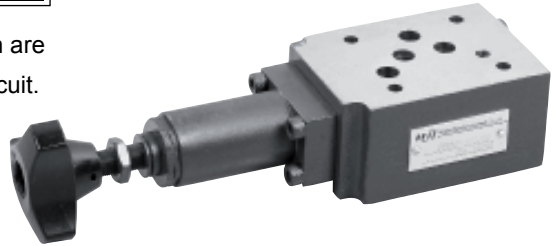


ZDR-D SERIES DIRECT REDUCING MODULAR VALVES

ZDR-D series are 3-way direct operated pressure reducing valves, which are used to reduce the pressure in a certain circuit lower than of the main circuit.



Z DR 6 D A 2 / 30 25 Y M *

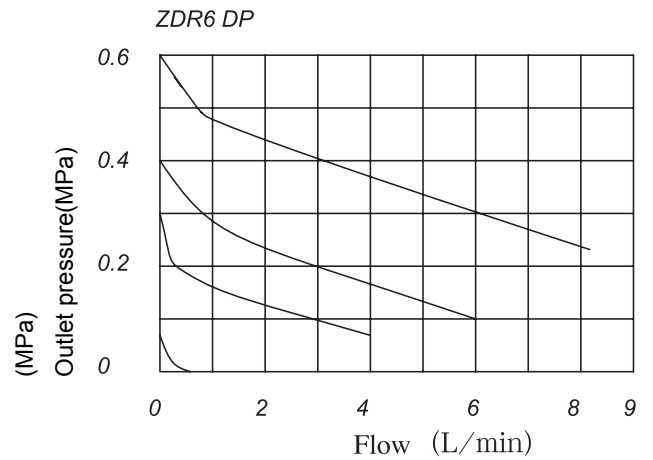
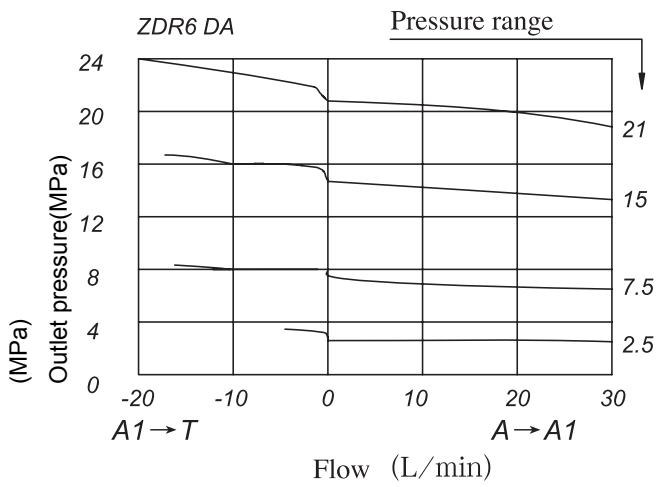
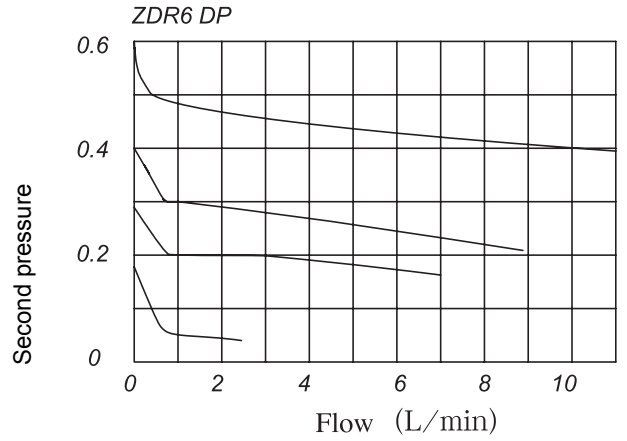
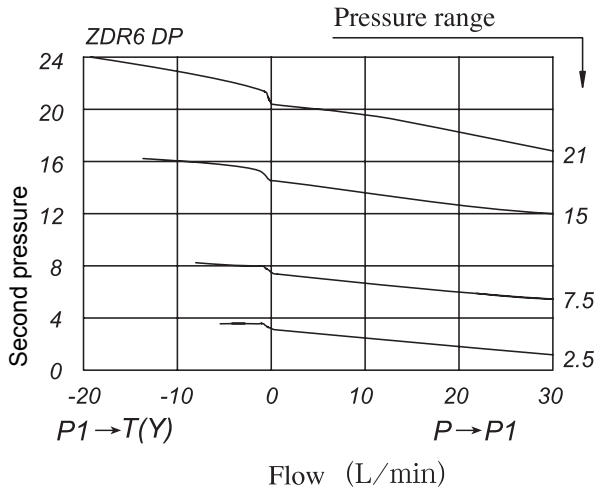
<p>Modular</p> <hr/> <p>Model</p> <hr/> <p>Size 6; 10</p> <hr/> <p>Direct type</p> <hr/> <p>Pilot oil port</p> <p>A= A oil port</p> <p>B= B oil port</p> <p>P= P oil port</p> <hr/> <p>1= Adjustable handwheel</p> <p>2= Adjustable screw</p> <p>3= Lockable handwheel</p>	<p>For further details</p> <hr/> <p>No code=With check valve</p> <p>M=Without check valve</p> <hr/> <p>Y=Internal pilot; external drain</p> <hr/> <p>Pressure range</p> <p>25: 2.5Mpa</p> <p>75: 7.5Mpa</p> <p>150: 15Mpa</p> <p>210: 21Mpa</p> <hr/> <p>Series number</p>
--	--

Technical data

Size	6	10
Operating pressure (MPa)	31.5	31.5
Second working pressure (MPa)	21	21
Back pressure (MPa)	6	6
Flow rate (L/min.)	30	60
Fluid temperature (°C)	-20~80	-20~80

Installation dimensions refer to page 5, 8.

▶ Operating pressure vs. flow curves



§ P – L/min

Curves through check valve

