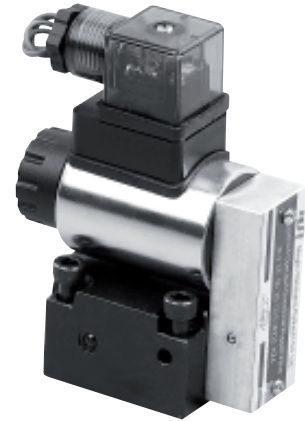
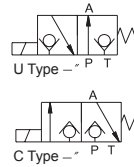


# MULTIFLUID



## SERIE M-SE



PAs de code=Sans insertion opercule

B0.8=Opercule 0.8mm

B10=Opercule 1.0mm

B12=Opercule 1.2mm

B14=Opercule 1.4mm

B15=Opercule 1.5mm

B18=Opercule 1.8mm

B20=Opercule 2.0mm

B22=Opercule 2.2mm

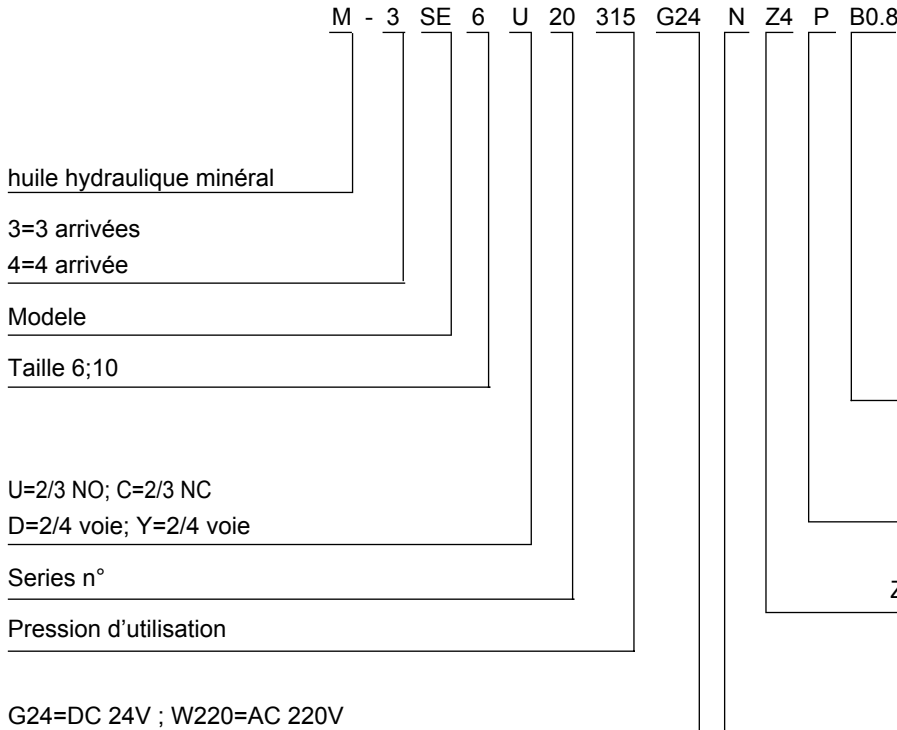
Pas de code=Sans clapet anti retour

P=Avec clapet anti retour

Z4=Quatre bornes; Z5=Connecteur large

Pas de code=Sans Cde auxiliaire

N=Avec Cde auxiliaire



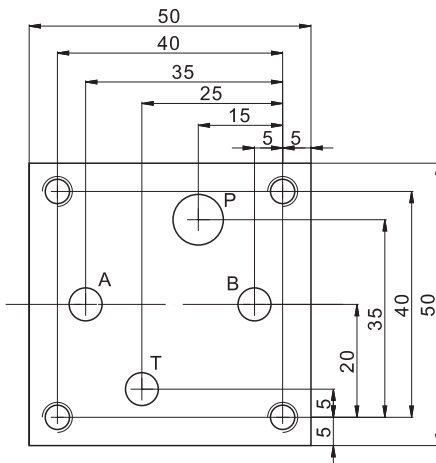
### Donnée Technique

Taille	6U	6C	6D	6Y	10U	10C	10D	10Y
Débit (L/min.)	16	16	12	12	30	24	30	24
Pression (MPa)	31.5							

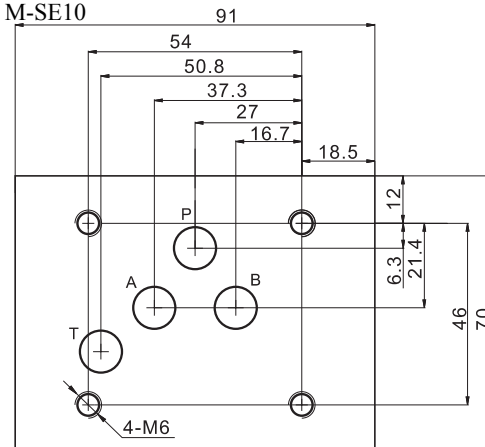


### Installation dimensions

M-SE6

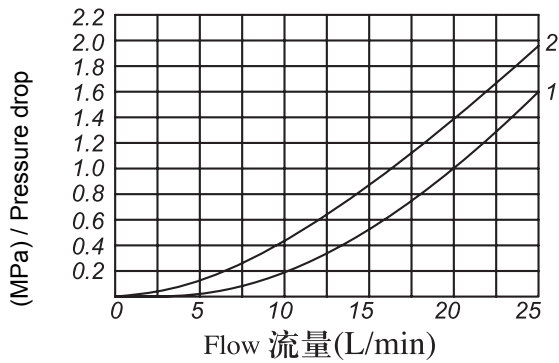


M-SE10



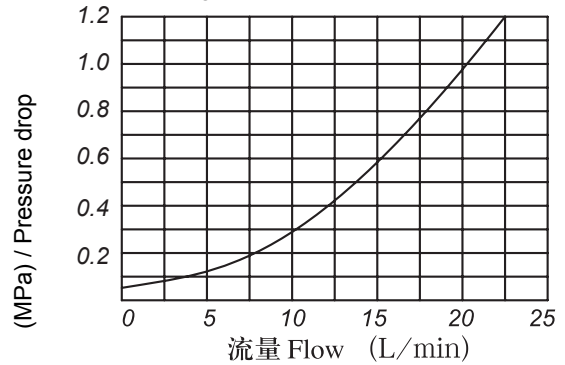
▶ Pressure drop vs. flow curves

2/2-way poppet valve



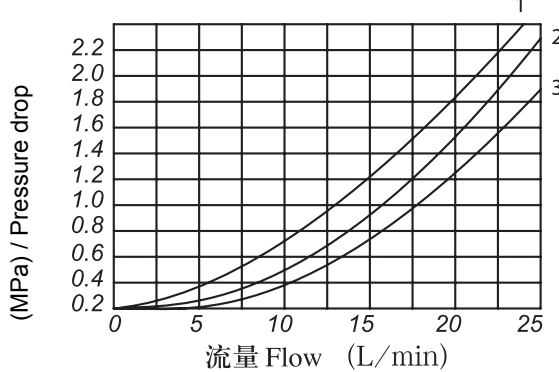
1. 2SE6N P-T
2. 2SE6P P-T

Cartridge check valve insert



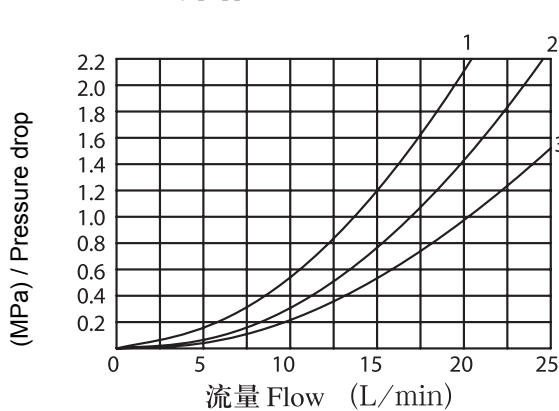
1. 3SE6 u/c A-T
2. 3SE6U P-A
3. 3SE6C P-A

3/2-way poppet valve

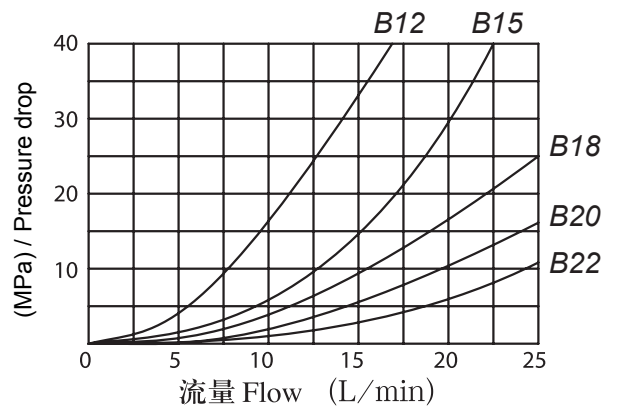


1. 4SE6 D/Y A-T
2. 4SE6 D/Y P-A
3. 4SE6 D/Y P-B, B-T

4/2-way poppet valve



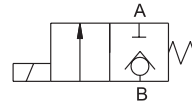
Orifice insert



# MULTIFLUID



SERIE QE



	M - 2 QE 6 B 20 / 315 G24 *	
huile hydraulique minéral		Autres spécifications
U=2/2 voie		G24=DC 24V ; W220=AC 220V
Modele		Pression d'utilisation 315 Bars
Taille		N° de série
		NC

## ▶ Installation dimensions

